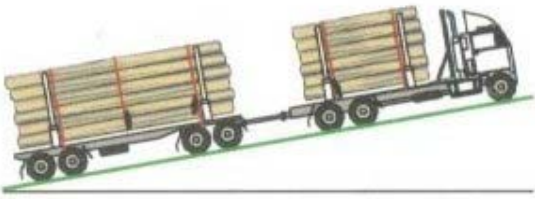
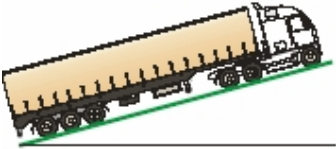
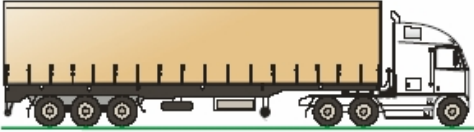
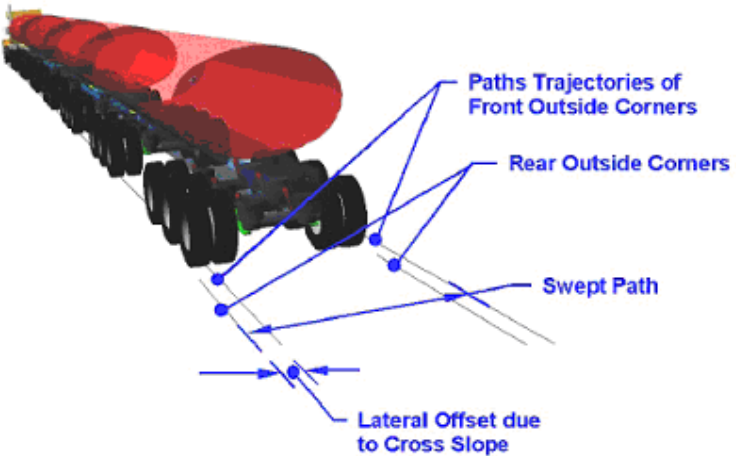


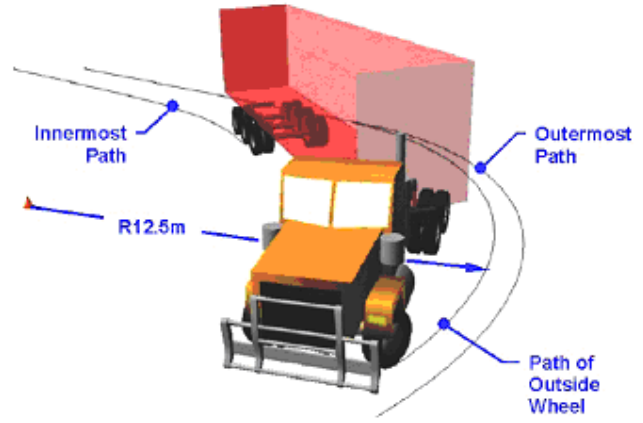
Vehicles are assessed under the PBS scheme according to a set of minimum vehicle 'performance' standards to ensure they are stable on the road and can turn and stop safely.

Below is a short description of the current standards illustrated by a diagram. For more information please refer to [The PBS Standards and Vehicle Assessment Rules](#).

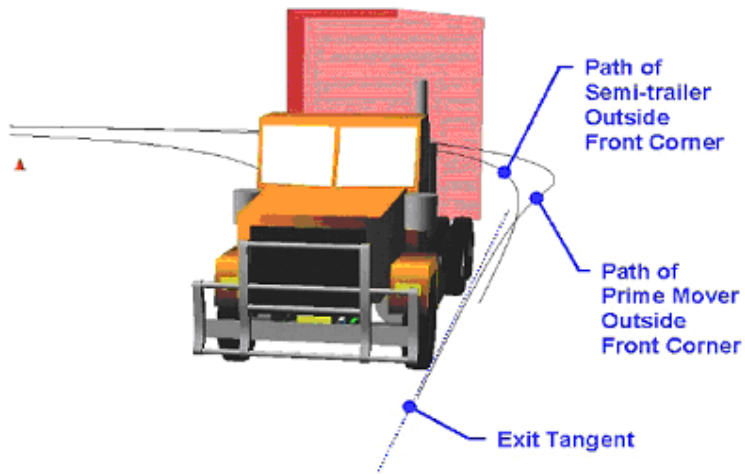
Longitudinal performance (low speed)		
Startability	Ability to commence forward motion on specified grade	
Gradeability	Ability to maintain forward motion on specified grade; and achieve a minimum speed on 1% grade	
Acceleration capability	Ability to accelerate either from rest or to increase speed on a road	
Tracking ability on a straight path	The total swept width while travelling on a straight path	 <p>Paths Trajectories of Front Outside Corners</p> <p>Rear Outside Corners</p> <p>Swept Path</p> <p>Lateral Offset due to Cross Slope</p>
Directional Performance (low speed)		

Longitudinal performance (low speed)

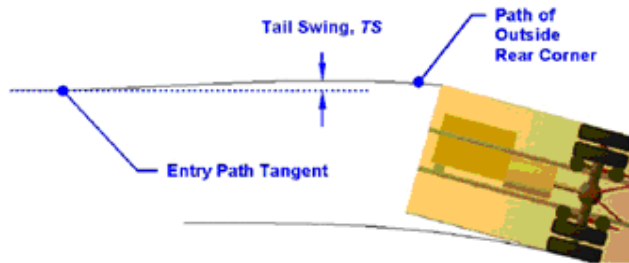
Low Speed Swept Path
 The maximum width of the swept path in a prescribed 90° low speed turn



Frontal Swing
 Maximum lateral outswing of the front outside corner of the prime mover and trailer



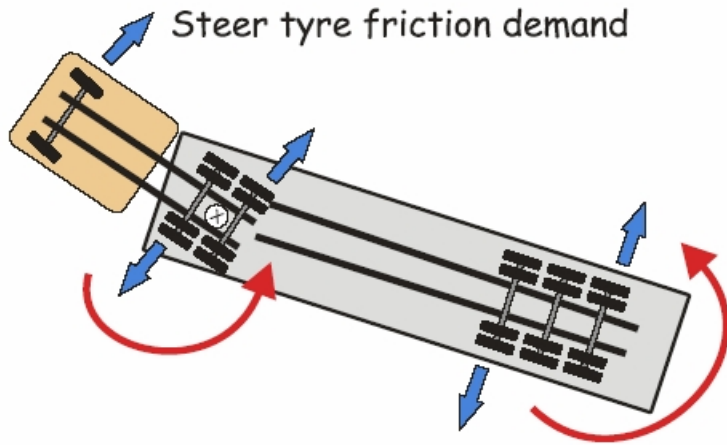
Tail Swing
 Maximum lateral outswing of the outside rear corner of the truck or trailer as the turn commences



Longitudinal performance (low speed)

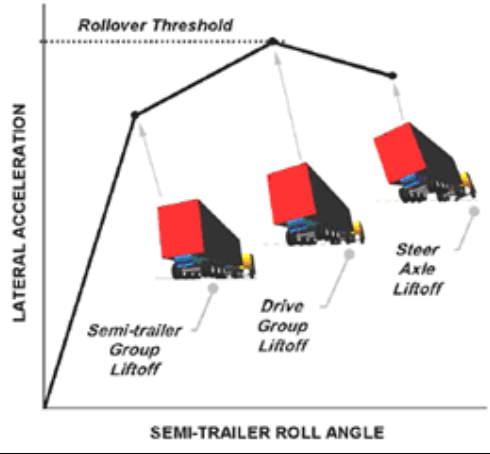
Steer Tyre Friction Demand

Maximum steer tyre friction in a prescribed low speed turn



Static Rollover Threshold

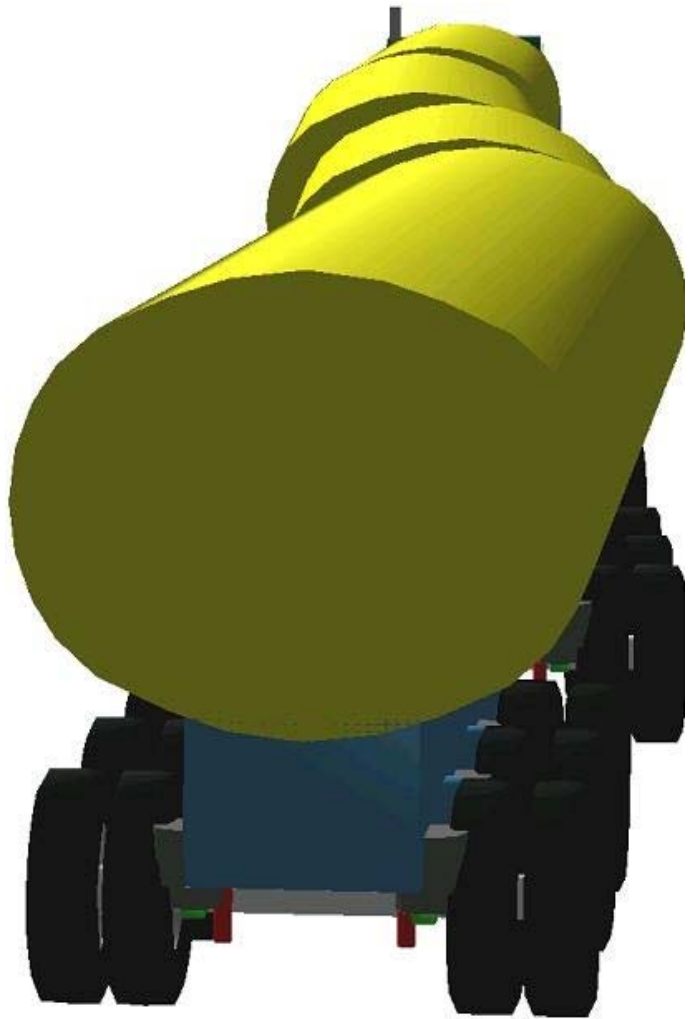
The steady-state level of lateral acceleration that a vehicle can sustain during turning without rolling over



Longitudinal performance (low speed)

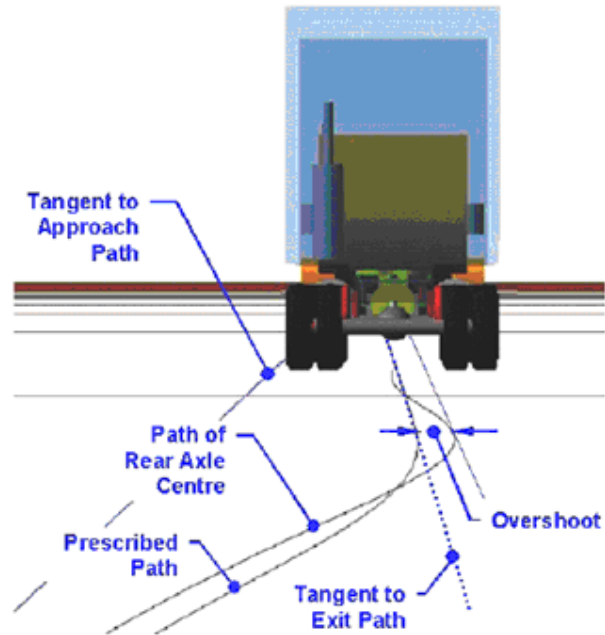
Rearward Amplification

Measures the 'whip crack' effect of a lane change manoeuvre

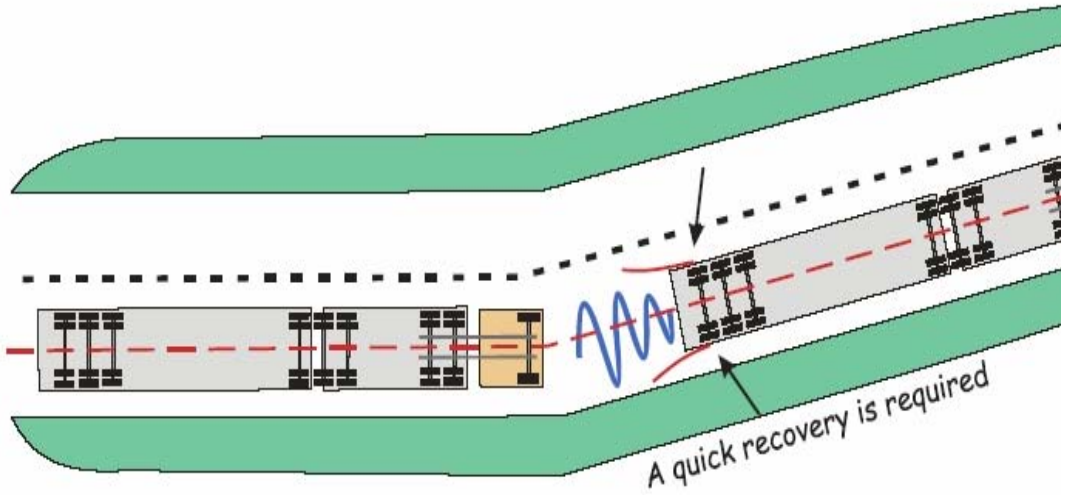


Longitudinal performance (low speed)

High Speed Transient Offtracking
 The lateral distance that the last-axle on the rear trailer tracks outside the path of the steer axle in a sudden evasive manoeuvre

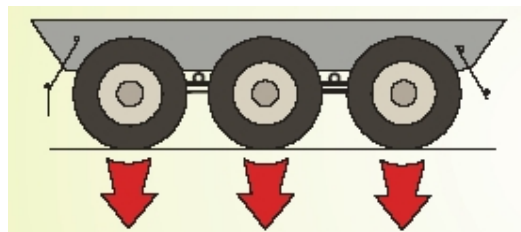


Yaw Damping Coefficient
 The rate of decay of the "sway" from the rearmost trailer after a single pulse steering movement.



Infrastructure related performance measures-pavement related

Pavement Vertical Loading
 Degree to which vertical forces are applied to the pavement



Longitudinal performance (low speed)

Bridge Loading

The maximum effect on a bridge measured relative to a reference vehicle

Bending Moment - Single Span

Close proximity of axle groups increases bending on span

