

Roads and Maritime Services
Class 1 Special Purpose Vehicle Notice 2012

I, Peter Duncan, Chief Executive Roads and Maritime Services (RMS), pursuant to Clause 12 of the *Road Transport (Mass, Loading and Access) Regulation 2005*, hereby exempt the vehicles described in Part 2 to the Schedule of this Notice from the mass and dimension limits prescribed in Schedule 1 to the *Road Transport (Mass, Loading and Access) Regulation 2005*, subject to the conditions set out in this Notice.

Peter Duncan
Chief Executive
Roads and Maritime Services

Schedule

PART 1: PRELIMINARY

1.1 CITATION

This Notice may be cited as the *Class 1 Special Purpose Vehicle Notice 2012*.

1.2 COMMENCEMENT

This Notice takes effect on and from publication in the NSW Government Gazette.

1.3 EFFECT

This Notice remains in force up to and including 30 September 2017 unless it is repealed earlier.

1.4 REPEAL

This Notice repeals and replaces the *Class 1 Special Purpose Vehicle Notice 2011* published in Government Gazette No. 26 on 1 July 2011 at pages 4738 to 4797.

1.5 INTERPRETATION

1.5.1 Unless stated otherwise in this Notice, words and expressions used in this Notice have the same meanings as those set out in *Road Transport (General) Act 2005*.

1.5.2 Unless otherwise stated, notes and diagrams in this Notice do not form part of this Notice.

PART 2: APPLICATION

2.1 Application

2.1.1 Subject to Clause 2.1.2, this Notice applies to:

(a) a Special Purpose Vehicle that exceeds an applicable mass or dimension limit prescribed in Schedule 1 to the *Road Transport (Mass, Loading and Access) Regulation 2005*, but does not exceed a mass or dimension limit in Schedule 2 of that Regulation, as set out in this Notice, and

(b) vehicles being used as pilot vehicles or escort vehicles.

2.1.2 This Notice does not apply to a Special Purpose Vehicle equipped with a triaxle drive group.

PART 3: MISCELLANEOUS CONDITIONS

- 3.1.1 A copy of this Notice (**excluding the APPENDICES**) must be carried in the driving compartment when operating under this Notice, and produced when requested to do so by a Police Officer or an Authorised Officer.
- 3.1.2 In addition to the conditions set out in this Notice, a vehicle operating under this Notice must comply with the conditions to Schedule 2 of the *Road Transport (Mass, Loading and Access) Regulation 2005*, excluding Part 2 and Part 4, as set out in Appendix 1 of this Notice.

3.2 INTELLIGENT ACCESS PROGRAM (IAP) – MOBILE CRANES

- 3.2.1 A mobile crane that exceeds 2.50 metres in width operating under this Notice must be enrolled and participating in the RMS Intelligent Access Program (IAP).
- 3.2.2 A Certificate of Enrolment in IAP or a document in a form approved by RMS as evidence of enrolment in IAP must be carried in the driving compartment of a mobile crane to which 3.2.1 applies and be produced when requested to do so by a Police Officer or an Authorised Officer.

PART 4: DIMENSION AND MASS LIMITS

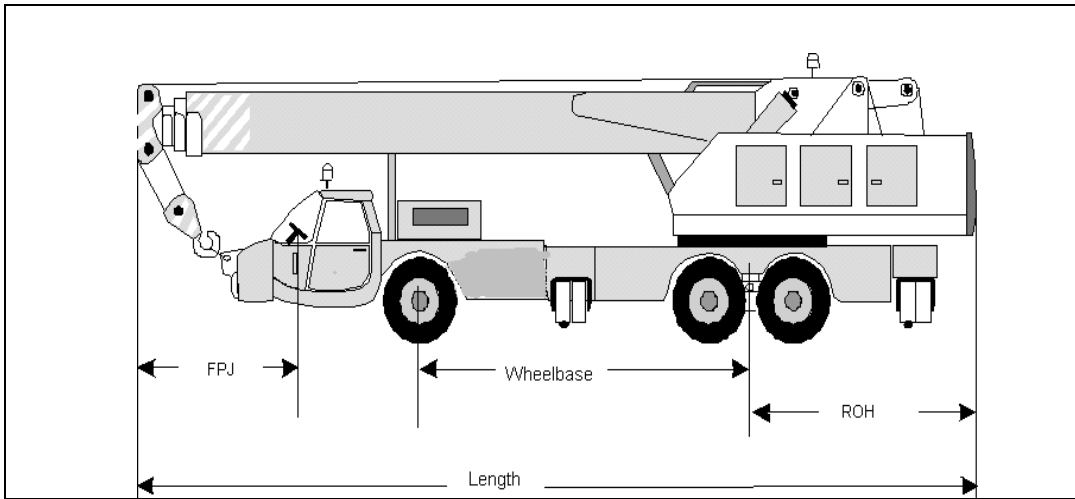
4.1 DIMENSION LIMITS

- 4.1.1 Subject to Clause 5.1 of this Notice, vehicles operating under this Notice must not exceed the dimension limits specified in Schedule 2 of the *Road Transport (Mass, Loading and Access) Regulation 2005* as set out in Table 1 of this Notice.

NOTE: If the dimensions of any Special Purpose Vehicle exceed those listed in Table 1, a **specific permit** issued by the RMS is required before travel is permitted.

Table 1: Maximum Overall Dimension Limits allowed under this Notice

Vehicle Type	Height	Width	Length	Projection in front of centre of steering wheel	Distance from the rear overhang line to rear of the vehicle (ROH)
Special Purpose Vehicle (truck based)	4.6m	2.5m	14.5m	3.5m	Lesser of 4m or 90% of wheel base
Mobile crane	4.6m	3.5m	14.5m	3.5m	Lesser of 4m or 90% of wheel base
Towed Special Purpose Vehicle trailer	4.6m	3.5m	14.5m	-	Lesser of 4m or 90% of wheel base
Towed Special Purpose trailer combination	4.6m	3.5m	25m	-	Lesser of 4m or 90% of wheelbase



4.2 MASS LIMITS

4.2.1 The total mass of a vehicle operating under this Notice must not exceed the lesser of:

- The gross vehicle mass (GVM); and
- The sum of the mass limit for each single axle and axle group provided by Clause 4.2.2; and
- Forty (40) tonnes; and
- The mass worked out using the following formula;

Gross Mass in tonnes = $3L + 15 +/-G$ where

L is the distance in metres between the centre lines of the vehicle's foremost and rearmost axles.

+/-G is a number of tonnes:

- to be added at the rate of 1 tonne for each 100mm by which the ground contact width of the rearmost axle exceeds 2.5 metres, or
- to be subtracted at the rate of 1 tonne for each 100mm by which the ground contact width of the rearmost axle is less than 2.4 metres.

NOTE: If the total mass of a Special Purpose Vehicle exceeds the mass limits allowable under this Notice, a **Specific Permit** issued by RMS is required before travel is permitted.

4.2.2 Mass limits for axles and axle groups

- The mass on a single axle or axle group described in Table 2 must not exceed the mass limit specified opposite its description in the Table.

Table 2

Type of axle or axle group	Mass limit (tonnes)
Single axle or single axle group fitted with:	
single tyres	7.0
dual tyres	10.0
Twinsteer axle group:	
without a load-sharing suspension system	10.0
with a load-sharing suspension system	14.0
Tandem axle group fitted with single tyres	14.0
Tri-axle group fitted with single tyres	18.0

- The mass on a tandem axle group fitted with dual tyres, where the centre lines of the axles are less than 1.35 m apart, must not exceed 20 tonnes:
 - decreased by 1 tonne for each 100 mm by which the axle group's ground contact width is less than 2.4 m, or

- (ii) increased by 1 tonne for each 100 mm by which the axle group's ground contact width exceeds 2.5 m, but not increased to more than 27 tonnes.
- (c) The mass on a tandem axle group fitted with dual tyres, where the centre lines of the axles are at least 1.35 m apart, must not exceed 23 tonnes:
 - (i) decreased by 1 tonne for each 100 mm by which the axle group's ground contact width is less than 2.4 m, or
 - (ii) increased by 1 tonne for each 100 mm by which the axle group's ground contact width exceeds 2.5 m, but not increased to more than 27 tonnes.
- (d) The mass on a tri-axle group fitted with dual tyres, where the centre lines of the axles are less than 1.35 m apart, must not exceed 25 tonnes, decreased by 1 tonne for each 100 mm by which the axle group's ground contact width is less than 2.4 m.
- (e) The mass on a tri-axle group fitted with dual tyres, where the centre lines of the axles are at least 1.35 m apart, must not exceed 27 tonnes, decreased by 1 tonne for each 100 mm by which the axle group's ground contact width is less than 2.4 m.

Overmass limits relating to axle ground contact width for Tandem and Triaxle axle groups fitted with dual tyres.

Ground contact width of axle (metres)	Tandem	Tandem	Triaxle	Triaxle
	Mass limit (tonnes) for axle spacing less than 1.35 metres apart	Mass limit (tonnes) for axle spacing at least 1.35 metres apart	Mass limit (tonnes) for axle spacing less than 1.35 metres apart	Mass limit (tonnes) for axle spacing at least 1.35 metres apart
2.00	16.0	19.0	21.0	23.0
2.10	17.0	20.0	22.0	24.0
2.20	18.0	21.0	23.0	25.0
2.30	19.0	22.0	24.0	26.0
2.40	20.0	23.0	25.0	27.0
2.50	20.0	23.0	25.0	27.0
2.60	21.0	24.0	25.0	27.0
2.70	22.0	25.0	25.0	27.0
2.80	23.0	26.0	25.0	27.0
2.90	24.0	27.0	25.0	27.0
3.00	25.0	27.0	25.0	27.0
3.10	26.0	27.0	25.0	27.0
3.20	27.0	27.0	25.0	27.0
> 3.20	27.0	27.0	25.0	27.0

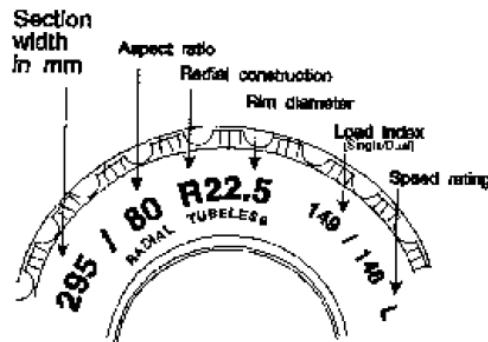
4.2.3 Tyre mass limits and axle group mass limits

- (a) In order to travel at the mass limits identified in Table 2 of Clause 4.2.2 (a) the tyre width limits in Table 3 must be met.
- (b) The mass on an axle fitted with tyres of a number and width described in Table 3 must not exceed the mass limit specified in the Table for that axle in relation to the narrowest tyre on the axle.

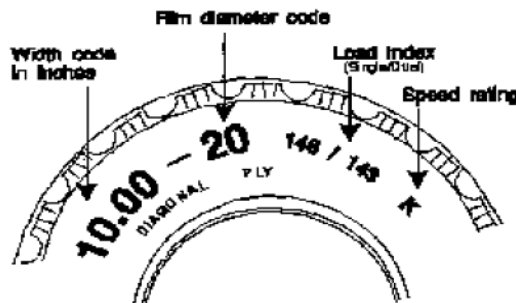
Table 3: Overmass limits relating to tyre width

Tyre tread section width of the narrowest tyre on the axle (mm)		Mass limit (tonnes) if the axle has	
At least	But less than	Two (2) tyres	Four (4) tyres
190	228	4.5	9.0
228	254	5.0	9.5
254	279	6.0	10.0
279	305	6.5	N/A
305	330	7.0	N/A

Note: For the purposes of Table 3 the tyre width of a radial ply tyre is the number of millimetres marked on the tyre in the position labelled “Section width in mm” on the diagram below.



The tyre width of a bias-type tyre is the number of millimetres equal to 25.4 times the number marked on the tyre in the position labelled “Width code in inches” on the diagram below.



5.1 APPROVED ROUTES AND AREAS OF TRAVEL

- 5.1.1 An oversize vehicle that does not exceed a dimension limit set out in this Notice may only operate on an approved route or zones, as set out in Appendix 2 of this Notice and in accordance with any applicable travel conditions.
- 5.1.2 Notwithstanding the dimension limits set out in the Notice, travel on or through a Limited Access Location is not permitted if the vehicle exceeds one or more of the limits that applies to a Limited Access Location as set out in Appendix 2 of this Notice.
- 5.1.3 In addition to clause 5.1.1, a vehicle that exceeds 4.3 metres, but not 4.6 metres in height must only be operated on routes approved for 4.6 metre high vehicles as set out in the current 4.6 Metre High Vehicle Notice.
- 5.1.4 An overmass vehicle that does not exceed the mass limits set out in Part 4 of this Notice is not permitted to travel on:
 - (a) mass restricted bridges set out in Appendix 2 of this Notice; or
 - (b) on any road or bridge that has a mass limit imposed under Section 28 of the Road Transport (General) Act 2005
- 5.1.5 Overmass and oversize vehicles operating under this Notice must:
 - (a) only be operated in or on an approved travel zone or route as set out in Appendix 2 and in accordance with any travel conditions that apply to a route or zone as set out in Appendix 2; and
 - (b) comply with Clause 5.1.2; and
 - (c) operate in accordance with Clause 5.1.3 if the vehicle exceeds 4.3 metres in height; and
 - (d) must not operate on:
 - (i) a mass restricted bridge set out in Appendix 2 of this Notice; or
 - (ii) any road or bridge that has a mass limit imposed under Section 28 of the Road Transport (General) Act 2005.

END OF NOTICE